

REVISIONS

1 DSA_V2 Date 1



NORWALK LA MIRADA UNIFIED SCHOOL DISTRICT
LA MIRADA HIGH SCHOOL NEW FOOTBALL
STADIUM PROJECT
13520 ADELEA DRIVE, LA MIRADA, CA 90638

DSA # 03-120551

NAC
ARCHITECTURE

NAC NO. 161-19015
DATE 12/10/2020

DSA BACKCHECK
SUBMISSION

WALL AND ROOF ASSEMBLIES

A3.00

WALL ASSEMBLIES

WALL FLAG KEY:

NUMBER INDICATES SUBSTRATE
LETTERS INDICATE SHEATHING TYPE SIDE OF WALL AFFECTED
ASTERISK INDICATES PARTIAL HEIGHT WALL +3'-6" AFF UNO ON INT ELEVATIONS

NOTES:

1. TYPICAL INTERIOR WALL ASSEMBLY IS TYPE A2/A AND TYPICAL EXTERIOR WALL ASSEMBLY IS 21 UNLESS SHOWN OTHERWISE. THE TYPICAL INTERIOR AND EXTERIOR WALL ASSEMBLIES ARE NOT FLAGGED EXCEPT FOR CLARITY. ALL NON-TYPICAL ASSEMBLIES ARE CALLED OUT.
2. A WALL ASSEMBLY CONTINUES THE FULL ROOM LENGTH, INCLUDING ANY JOGS, ANGLES, RECESSES, OR STUB WALLS FOR THE SIDE OF THE WALL UPON WHICH THE FLAG OCCURS.
3. WHERE DIFFERENT STUD SIZES OCCUR ALONG A CORRIDOR WALL, IT IS INTENDED THAT THE CORRIDOR SIDE FINISHES ALIGN.
4. ALL INTERIOR STUD FRAMING AND FURRING IS 16" OC UNO.
5. EXTEND FRAMING, INSULATION, & SHEATHING COMPONENTS TO BOTTOM OF DECK ABOVE UNO.
6. PROVIDE FS25 VAPOR BARRIER AT ALL WALLS/ LOCATIONS NOTED WITH VAPOR BARRIER WHERE VAPOR BARRIER IS NOT COVERED BY SHEATHING (I.E., SHELL SPACES, INTERSTITIAL SPACES ABOVE CEILINGS).
7. COMBINATION SHEATHING SUCH AS "B,C" INDICATES ONE SHEATHING MATERIAL ABOVE OR BELOW THE OTHER. SEE INTERIOR ELEVATIONS FOR EXTENT.
8. REFER TO DETAILS, STRUCTURAL DRAWINGS AND NOTES FOR PROPER INSTALLATION OF MATERIALS LISTED IN WALL ASSEMBLIES, INCLUDING INFILL CONNECTIONS AND CONNECTIONS TO FOUNDATION AND DECK.
9. ALL GYPSUM BOARD TO BE TYPE "X" UNO. ALL GYPSUM BOARD IN "WET" ROOM WALLS (TOILET ROOMS, CUSTODIAL ROOMS) TO BE WATER RESISTANT TYPE EXCEPT AS NOTED. DO NOT USE WATER RESISTANT GYPSUM BOARD ON CEILINGS. WALLS BEHIND CERAMIC TILE FINISH TO RECEIVE CEMENT BACKER BOARD.
10. ALL GYPSUM BOARD SURFACES TO BE PREPARED FOR PAINT GRADE FINISH UNO.
11. FOR FINISHES, REFER TO FINISH SCHEDULE AND INTERIOR ELEVATIONS.
12. WALL ASSEMBLY TAGS DESCRIBE MAJOR EXTENT OF EXTERIOR WALL ASSEMBLY. SEE ELEVATIONS AND DETAILS FOR TRANSITIONS IN, AND LOCATIONS OF, CHANGES IN EXTERIOR WALL ASSEMBLIES.
13. PROVIDE ABUSE RESISTANT GYPSUM BOARDS WHERE NOTED ON INTERIOR ELEVATIONS.
14. ON EXTERIOR WALLS, SEE ELEVATIONS FOR LOCATION OF TRANSITION OF EXTERIOR CLADDING. WALL ASSEMBLY REFLECTS GENERAL WALL CONDITION, DETAILS & ELEVATIONS WILL INDICATE CHANGES.

EXTERIOR WALL SUBSTRATE MATERIALS

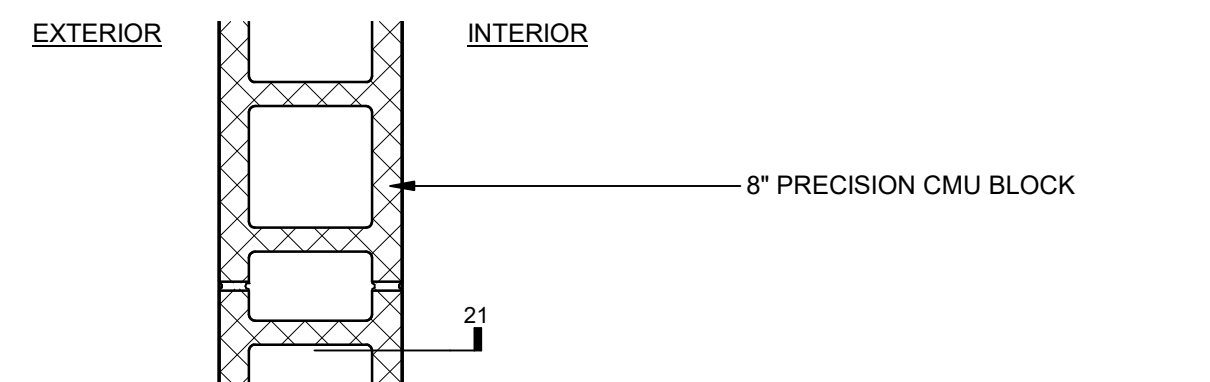
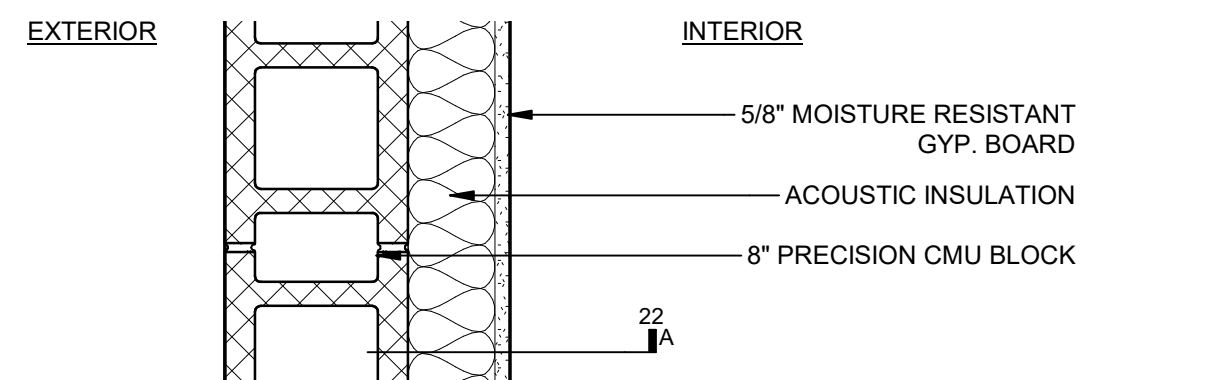
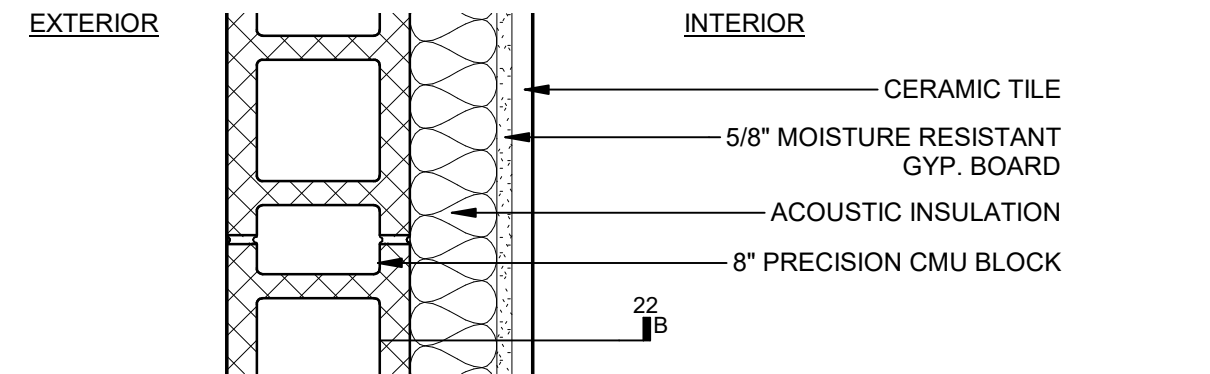
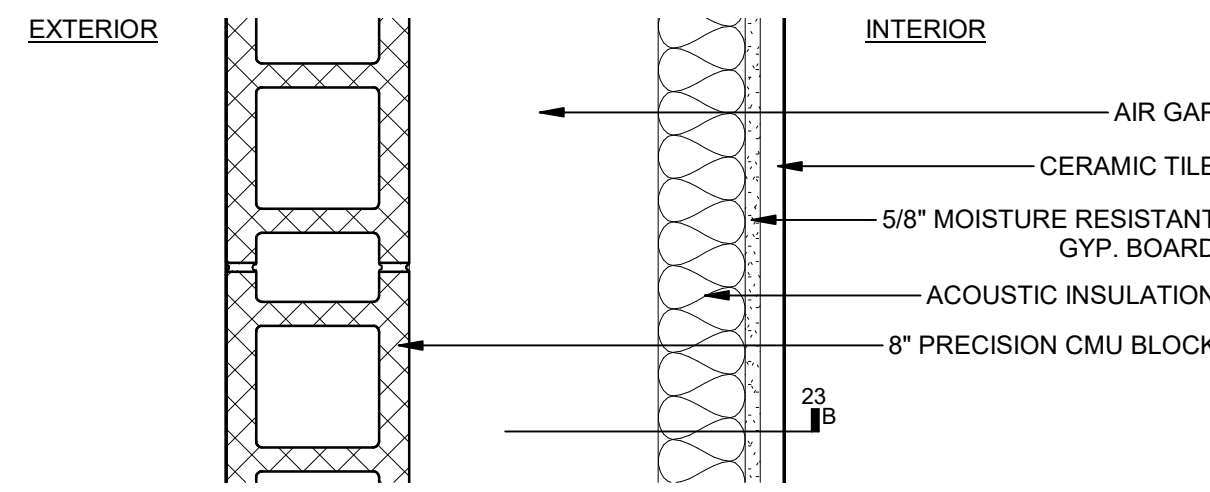
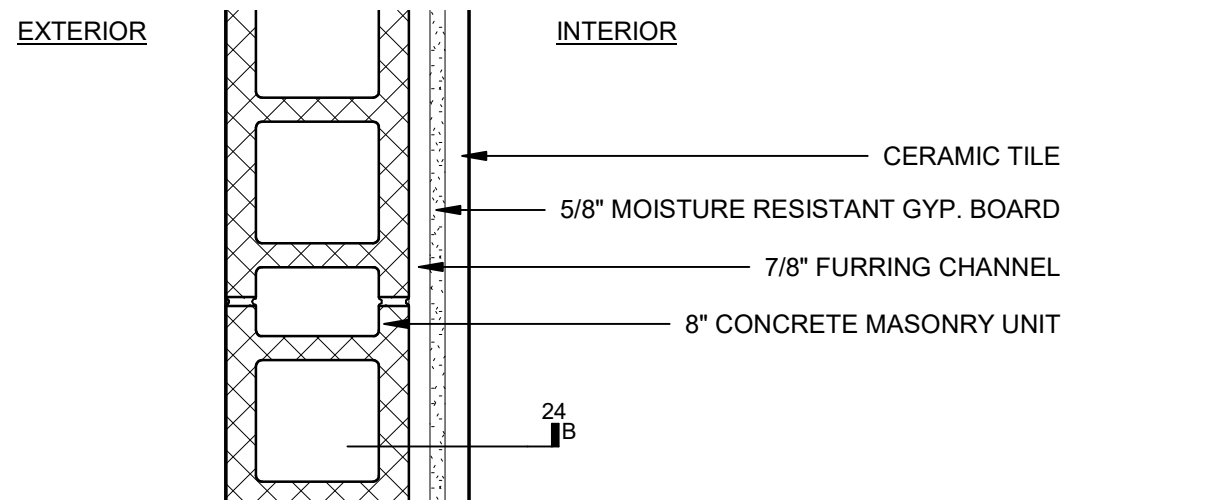
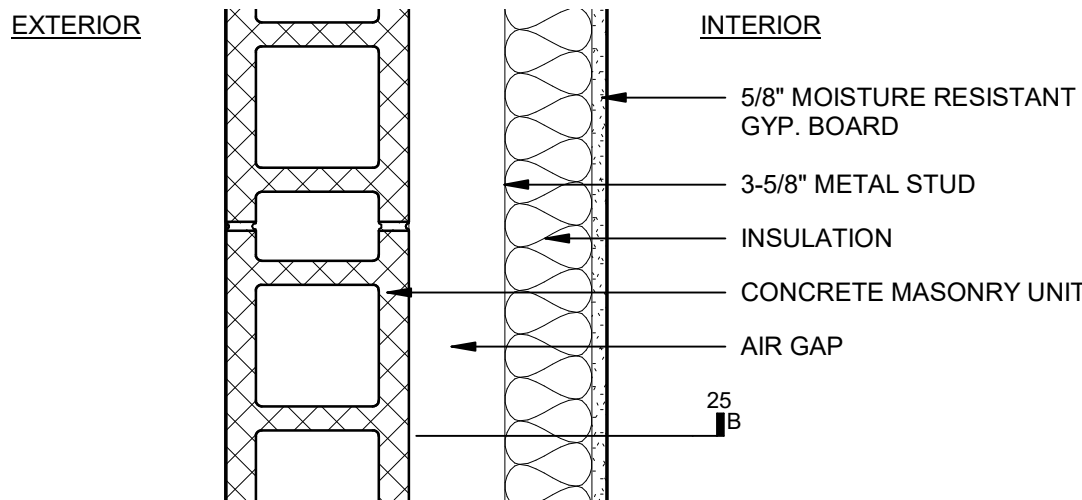
- 21
8" CONCRETE MASONRY UNIT
- 22
8" CONCRETE MASONRY UNIT
3 5/8" METAL STUD
- 23
8" CONCRETE MASONRY UNIT
4" AIR
3 5/8" METAL STUD
- 24
8" CONCRETE MASONRY UNIT
7/8" FURRING CHANNEL

INTERIOR WALL SHEATHING MATERIALS

- A 5/8" GYPSUM BOARD
- B 5/8" MOISTURE RESISTANT GYPSUM BOARD
1/2" THINSET
CERAMIC TILE UP TO 7'-0"

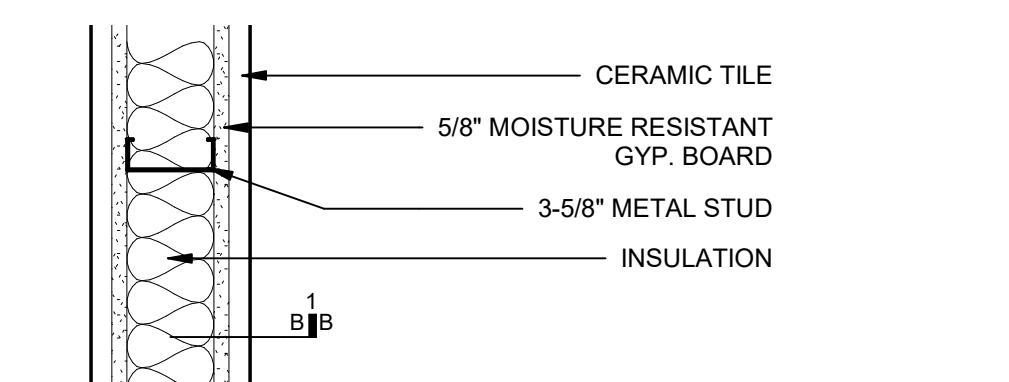
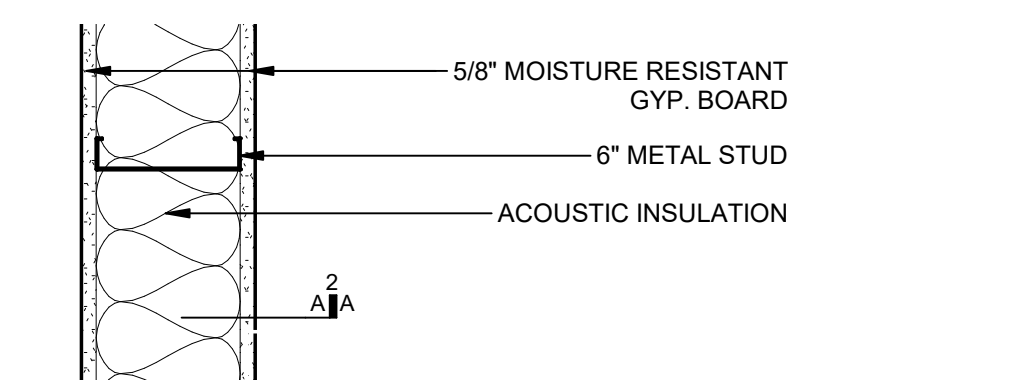
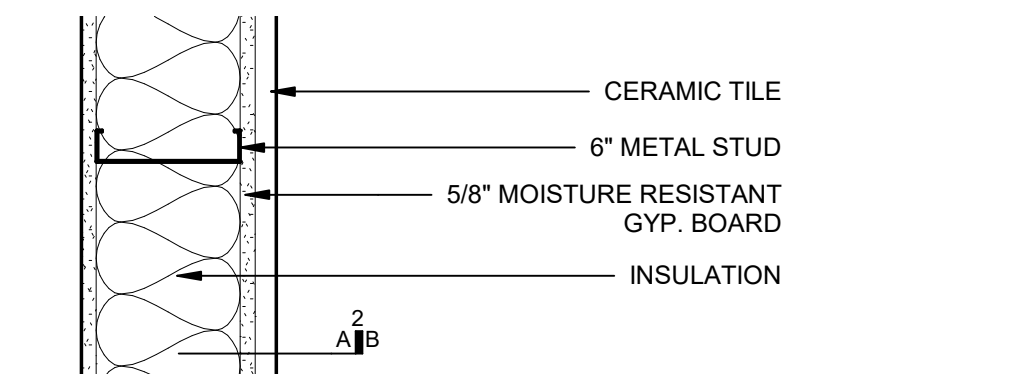
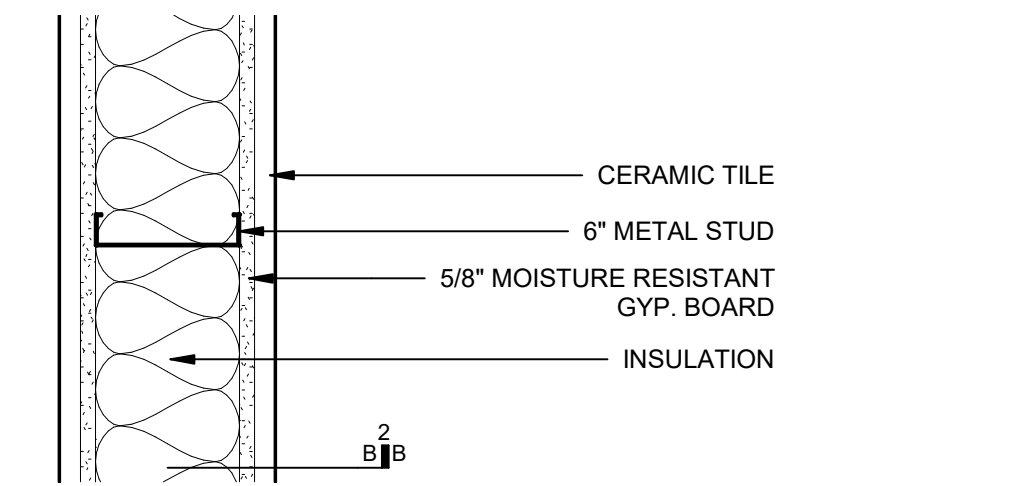
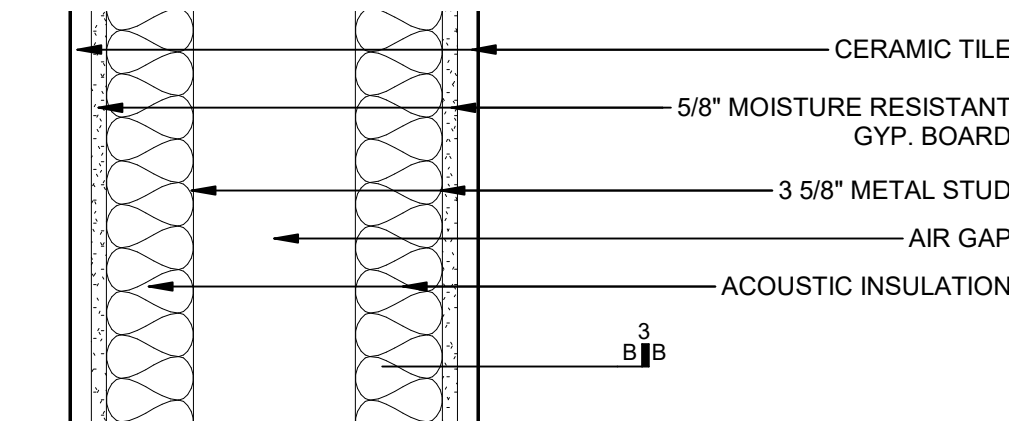
INTERIOR WALL SUBSTRATE MATERIALS

- 1 3-5/8" METAL STUD
- 2 6" METAL STUD
- 3 3-5/8" METAL STUD
11 1/2" AIR GAP
3-5/8" METAL STUD



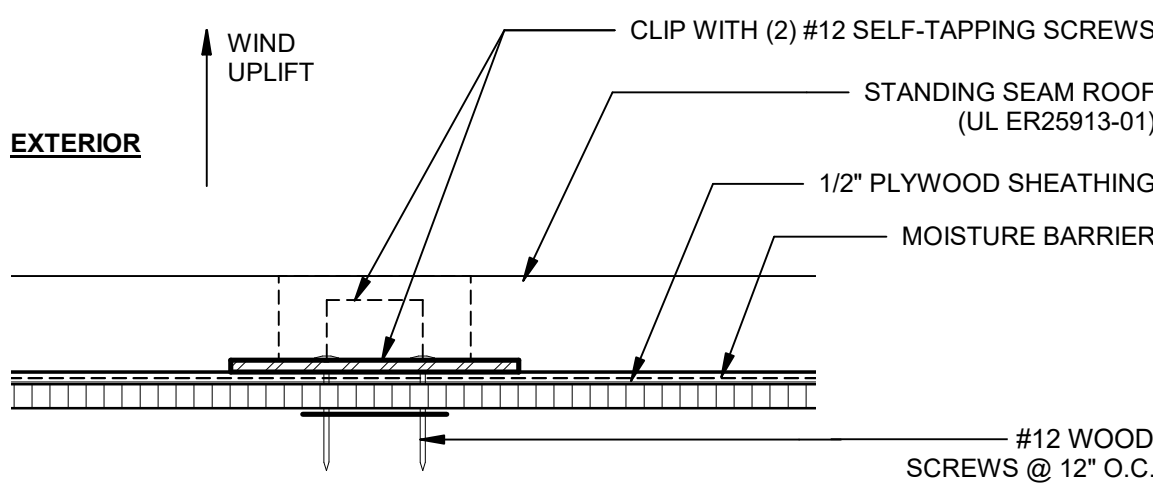
COMMON EXTERIOR WALL TYPES

Scale: 1 1/2" = 1'-0"

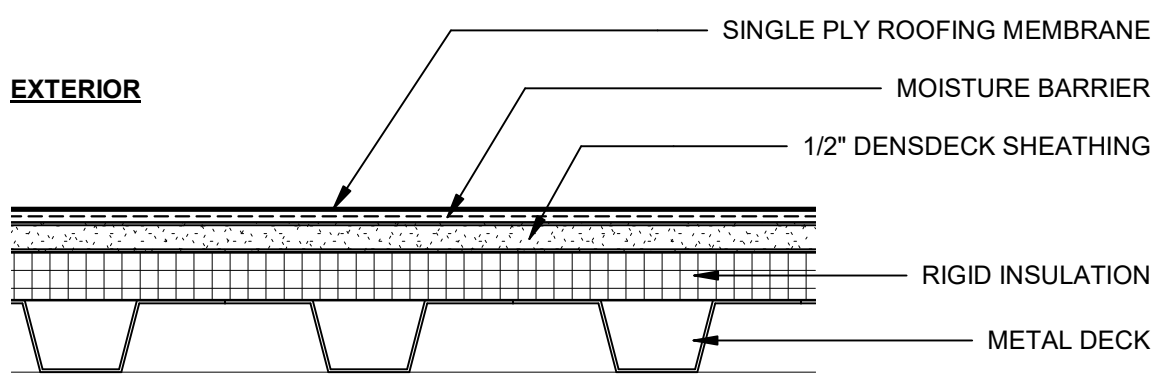


COMMON INTERIOR WALL TYPES

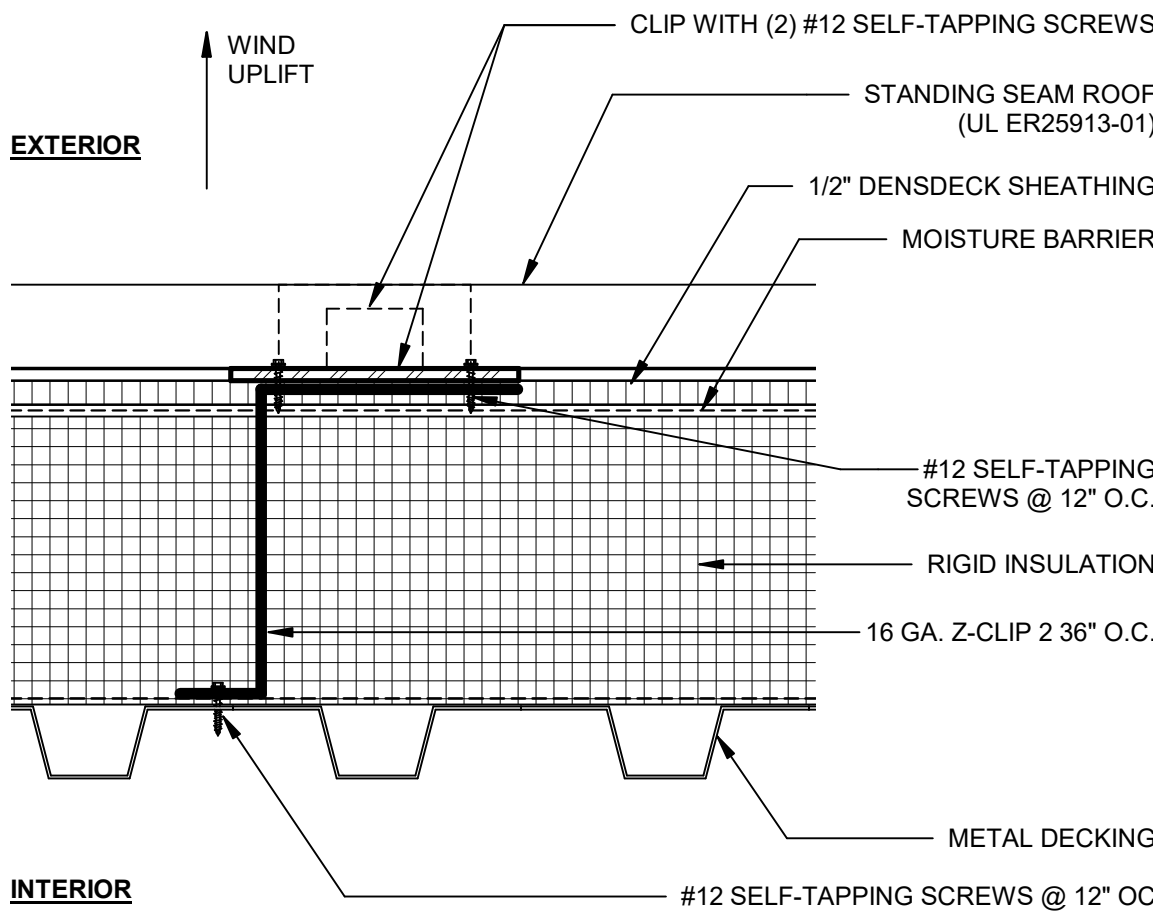
Scale: 1 1/2" = 1'-0"



STANDING SEAM ROOF ASSEMBLY OVER WOOD JOIST



SINGLY PLY ROOF ASSEMBLY OVER METAL DECK



STANDING SEAM ROOF ASSEMBLY OVER METAL DECK

COMMON ROOF ASSEMBLIES

Scale: 3" = 1'-0"